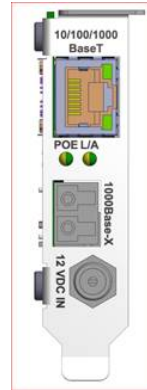


# N-GXE-POE-EPS-KIT

## PoE NIC External Power Supply Kit

### Quick Start Guide

- Custom power solution
- Powers the N-GXE-POE-xx-01
- Fits in the HP™ t730 Thin Client



## Introduction

The Transition Networks N-GXE-POE-EPS-KIT is a custom power solution for powering the PoE NIC externally in situations where an HP™ t730 Thin Client cannot supply adequate PoE or PoE+ power. The PoE NIC (N-GXE-POE-xx-01) requires 32W for PoE load, 42W for PoE+ and fits in the HP™ t730 Thin Client.

The N-GXE-POE-EPS-KIT includes one 40W Power Adapter, one Low-profile NIC Mounting Bracket for Power Cable Connector Access, one Cable Assembly, and one Power Cord.

See the N-GXE-POE-EPS-KIT Install Guide for Kit Contents, Thin Client description, Power Supply specs and notes, Mounting bracket, Cable assembly, installation instructions, pre-installation checklist, installation procedure, operation, status LEDs, troubleshooting, Compliance information, and all related Warnings, Cautions, and Notes.

## Related Information

A full N-GXE-POE-EPS-KIT Install Guide is available on line.

For Transition Networks Drivers, Firmware, and Manuals go to the [Product Support webpage](#) (no logon required).

For Transition Networks Application Notes, Brochures, Case Studies, Data Sheets, Specifications, Webinars, etc. go to the [Support Library](#) (no registration required).

Before performing upgrades be sure to carefully read all of the applicable instructions, cautions, and warnings in the *HP t730 Thin Client Troubleshooting Guide*.

## 40W Power Supply

The external switching power supply is a highly reliable 40W desktop style single-output green adapter. It is a class I power unit with FG, equipped with a standard IEC320-C14 AC inlet, and adopting the input range from 90 VAC to 264 VAC. The design allows the power supply to save the energy when it is either under operating mode or standby mode. It comes in a flame retardant plastic case and is certified for the international safety regulations.

## Low-profile NIC Mounting Bracket for Power Connector Access

The Low-profile NIC Mounting Bracket for Power Connector Access is designed to replace the original low profile NIC bracket on the N-GXE-POE-xx-01. It allows power to be provided to the NIC.

## Cable Assembly

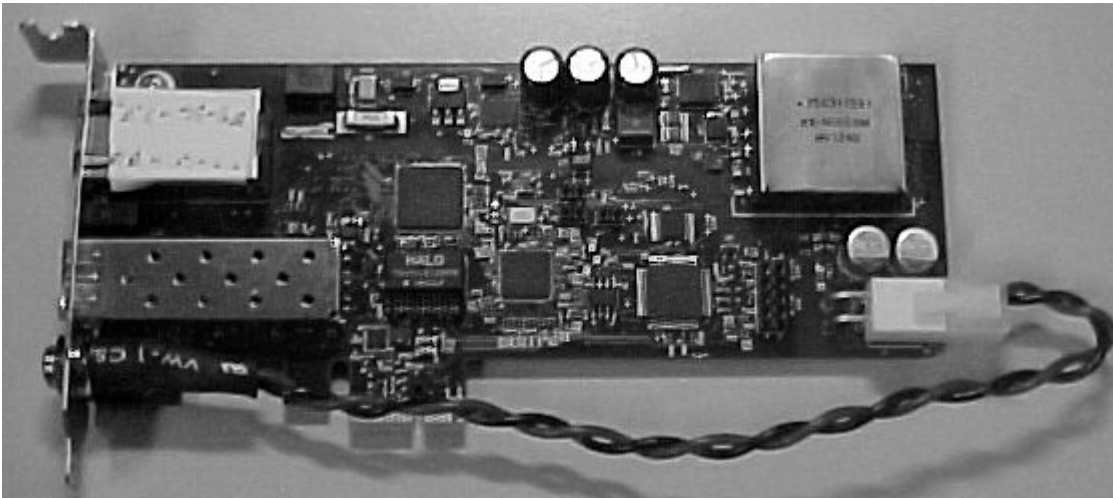
The Cable Assembly is used to power the PoE NIC externally in situations where an HP t730 Thin Client cannot supply adequate PoE or PoE+ power. **Note:** the NIC must be installed before the power connector is connected.


## Power Cord

The supplied Power Cord is a NEMA 5-15P to IEC320 C13. It provides AC power to the NIC at the **12VDC IN** connector.

## Installation Procedure

Review the Pre-Installation Checklist in the Install Guide before installing your N-GXE-POE-EPS-KIT.



1. Remove original low profile NIC bracket from N-GXE-POE-xx-01. Retain screws for re-use with new low profile bracket.
2. Insert 2.1mm barrel panel-mount connector into new PCIe bracket (NIC side). On front side of bracket, add washer and fasten retaining bolt.
3. Using screws retained from original bracket, attach new PCIe bracket/cable assembly to NIC.
4. Install NIC into HP t730 Thin Client.
5. Plug white 4-pin connector from power cable assembly into power connector on NIC.
6.  **CAUTION:** Before powering up wall adapter power supply, connect power supply to NIC. Inserting 12V plug into NIC with power applied may blow input fuse.

The final assembly will look similar to the figure below.



## Contact Us

Transition Networks  
10900 Red Circle Drive  
Minnetonka, MN 55343, U.S.A.  
telephone: 952-941-7600  
toll free: 800-526-9267  
fax: 952-941-2322

