

# Device Management System

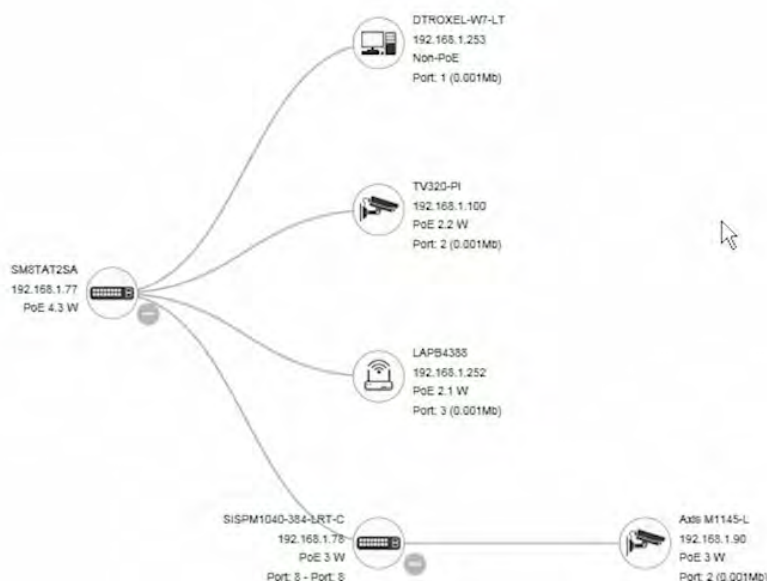
Transition Networks' portfolio of PoE enterprise and hardened switches has expanded to include the Device Management System (DMS) software that provides advanced tools necessary for total management of all connected network elements. Transition Networks' unique set of value-added features and capabilities provide security integrators with lower overall cost, less downtime, and easier management and maintenance of the entire PoE network.

## Advanced Features

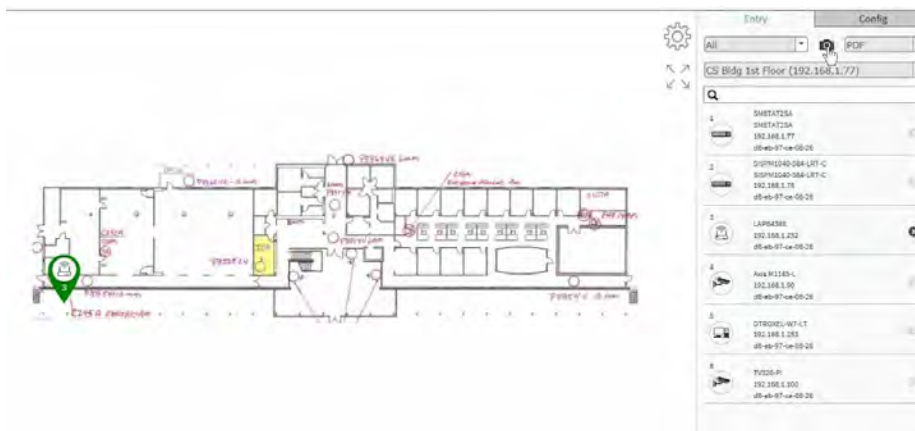
- Automatically discover and remotely configure attached IP-addressable powered devices (PD)
- Establish and document a baseline deployment
- Graphical topology view for device management
- Floor view for device management (import JPEG design drawings)
- Google Maps™ view for device management
- **Auto Power Reset (APR)** monitors and automatically restarts edge devices
- Troubleshoot cable and IP connection issues
- Monitor and analyze traffic by Day/Week/Port/Device
- Perform health checks with thresholds
- Auto-Alarm on error conditions

## Feature Applications

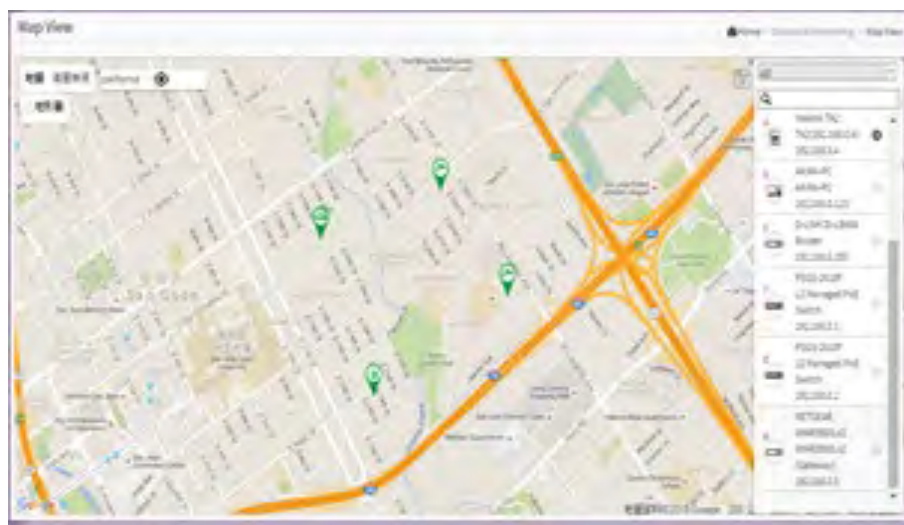
- Topology View provides end-to-end visibility of attached PD's with remote access into each device



- Floor View allows the designer to import existing JPEGs of the floor and site drawings into the DMS



- Google Maps™ View allows the PDs to be visible by State, City, and Street Address



## Device Management

### Direct Management of Attached PD

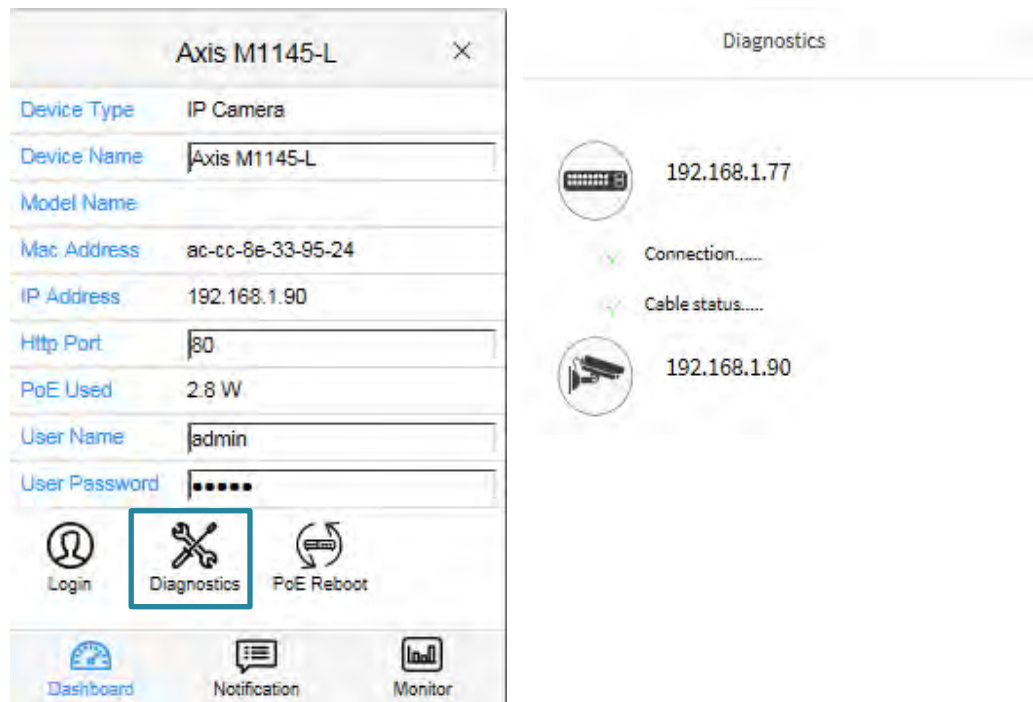
Transition Networks' DMS allows you to manage your PoE network by clicking on the device and using the pop-up window interface. It shows the Device Type, Device Name, MAC Address, IP Address, and PoE Wattage used by the PD. It incorporates a dashboard feature which also allows the user to remotely log in, configure, monitor, and reboot the PD. This provides direct management and control of the attached devices from the switch port interface.



## Network Diagnostics

Enhanced diagnostics including IP connectivity and physical layer cabling checks and tests are available with the DMS:

- One-click cable diagnosis
- One-click to check device alive
- Instant identification of faulty cable connections
- Convenient reboot of remote devices to resume operation



The screenshot shows the configuration page for an Axis M1145-L IP camera. The 'Diagnostics' tab is selected, and the 'Diagnostics' button in the bottom navigation bar is highlighted with a blue box. The configuration details are as follows:

Field	Value
Device Type	IP Camera
Device Name	Axis M1145-L
Model Name	
Mac Address	ac-c0-8e-33-95-24
IP Address	192.168.1.90
Http Port	80
PoE Used	2.8 W
User Name	admin
User Password	*****

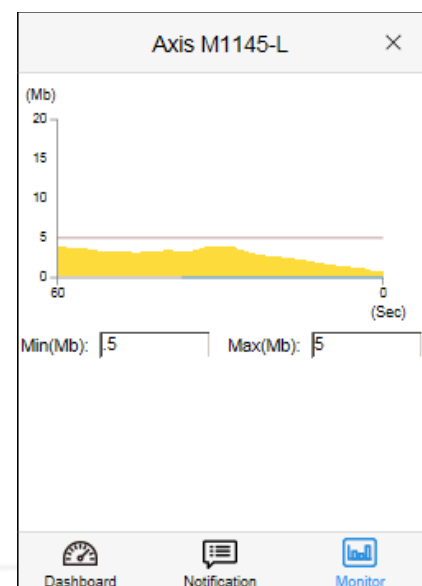
The 'Diagnostics' panel on the right shows two entries:

- 192.168.1.77: Connection status is green (✓), Cable status is green (✓).
- 192.168.1.90: Connection status is green (✓), Cable status is green (✓).

## Network Monitoring

Real-time graphical monitoring of traffic and statistics, health checking of powered devices with ICMP ping “keep alive”, and auto-alarming for exceeded thresholds:

- Monitor traffic and packets of devices
- Analyze by day/week/port/device
- Perform health check by threshold
- Auto-alarming if abnormal condition exists



## Current Products

Transition Networks' Device Management System is currently supported by these products:

### Smart Managed Gigabit Ethernet PoE+ Switches

#### [SM8TAT2SA](#)

- (8) 10/100/1000Base-T PoE+ Ports, (2) 100/1000 SFP Slots

#### [SM8TAT2SA-DC](#)

- (8) 10/100/1000Base-T PoE+ Ports, (2) 100/1000 SFP Slots, DC-Powered

#### [SM16TAT2SA](#)

- (16) 10/100/1000Base-T PoE+ Ports, (2) 100/1000 SFP Slots

#### [SM24TAT2SA](#)

- (24) 10/100/1000Base-T PoE+ Ports, (2) 100/1000 SFP Slots

### Managed Gigabit Ethernet PoE+ Switch

#### [SM24TAT4XB](#)

- (24) 10/100/1000Base-T PoE+ Ports, (4) 1G/10GBase-X SFP+ Slots

#### [SM48TAT4XA-RP](#)

- (48) 10/100/1000Base-T PoE+ Ports, (4) 1G/10GBase-X SFP+ Slots

### Managed Gigabit Ethernet PoE++ Switch

#### [SM24TBT2DPA](#)

- (24) 10/100/1000Base-T PoE++ Ports, (2) 100/1000Base-X SFP/RJ-45 Combo Ports

### Managed Hardened Gigabit Ethernet PoE+ Switches

#### [SISPM1040-384-LRT-C](#)

- (8) 10/100/1000Base-T PoE+ Ports, (4) 100/1000Base-X SFP Slots

#### [SISPM1040-362-LRT](#)

- (4) 10/100/1000Base-T PoE+ Ports, (2) 10/100/1000Base-T RJ-45 Ports, (2) 100/1000Base-X SFP Slots

### Managed Hardened Gigabit Ethernet PoE+ Rack Mountable Switch

#### [SISPM1040-3166-L](#)

- (16) 10/100/1000Base-T PoE+ Ports, (4) 100/1000Base-X SFP Slots, (2) 1G/10GBase-X SFP+ Slots

#### [SISPM1040-3248-L](#)

- (24) 10/100/1000Base-T PoE+ Ports, (4) 100/1000Base-X SFP Slots, (4) 1G/10GBase-X SFP+ Slots

### Managed Hardened Gigabit Ethernet PoE++ Switch

#### [SISPM1040-582-LRT](#)

- (8) 10/100/1000Base-T PoE++ Ports, (2) 100/1000Base-X SFP Slots

### Managed Gigabit Ethernet Switches

#### [SM24T6DPA](#)

- (20) 10/100/1000Base-T Ports, (4) 100/1000Base-X SFP/RJ-45 Combo Ports, (2) 100/1000Base-X SFP Slots

#### [SM24DPB](#)

- (20) 100/1000Base-X SFP Slots, (4) 100/1000Base-X SFP/RJ-45 Combo Ports

### Managed Gigabit Ethernet Fiber Switch

#### [SM12DP2XA](#)

- (12) 100/1000Base-X SFP Slots, (2) 1G/10GBase-X SFP+ Slots, (2) 10/100/1000Base-T RJ-45 Ports

#### [SM24DP4XA](#)

- (24) 100/1000Base-X SFP Slots, (4) 100/1000Base SFP/RJ-45 Combo Ports, (4) 1G/10GBase-X SFP+ Slots

### Managed Hardened Gigabit Ethernet Switch

#### [SISGM1040-284-LRT](#)

- (8) 10/100/1000Base-T Ports, (4) 100/1000Base-X SFP Slots