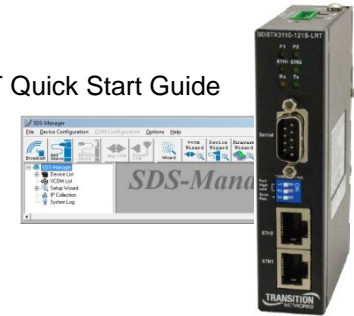


SDSTX3110-121S-LRT Industrial Serial Device Server

Quick Start Guide

Introduction

The SDSTX3110-121S-LRT is an innovative Industrial secure one port RS-232/422/485 to two ports LAN device server. Standard features include TCP/IP interface and versatile operating modes: Virtual Com, Serial Tunnel, TCP Server, TCP Client, and UDP. The SDS-Manager Windows utility can configure multiple devices and set up Virtual COM mappings. See the full SDSTX3110-121S-LRT User Guide for important Safety Warnings, plus product numbers, features, applications, dimensions, unpacking, installation, management software, specs, troubleshooting, and service, warranty, and tech support information.



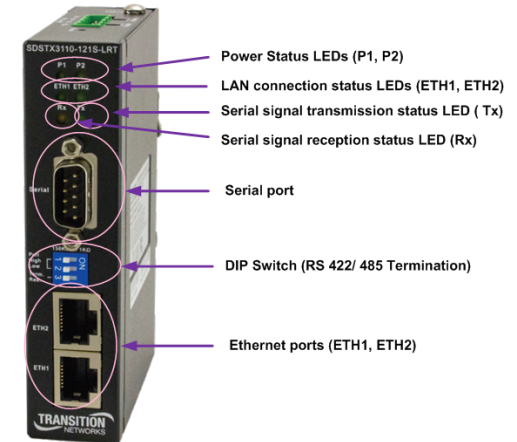
Hardware Overview

Mounting Options: Install the SDS on DIN rail, Panel or wall, or Rack mount. See the full **SDSTX3110-121S-LRT User Guide** for details.

Front Panel: Power status LEDs, LAN port LEDs, Ethernet ports, Serial signal TX and RX status LEDs, Serial port.

Top panel: Grounding screw, DC 12-48V Terminal Block, and Reset button.

LED	Color	State	Description
P1 / P2	Green	On	Power is on and device is functioning normally.
ETH1 / ETH2	Green	On	Port is connected
ETH1 / ETH2	Green	Blinking	Data Transmitted.
Rx	Amber	On	Receiving Serial data.
Tx	Green	On	Transmitting Serial data.



Grounding and wire routing help limit electromagnetic interference (EMI). Run the ground connection from the grounding screw on the top panel to the grounding surface before connecting devices.



Connections

10/100BASE-T(X) Pin Assignments: The device has a standard Ethernet port. Based on link type, it uses CAT 3, 4, 5, or 5e UTP cables to connect to other network devices (PCs, servers, switches, routers, or hubs). On 10/100BASE-T(X) cables, pins 1 and 2 transmit data, and pins 3 and 6 receive data.

Cable	Type	Max. Length	Connector
10BASE-T	CAT 3, 4, 5 100-ohm	UTP 100 m (328 ft.)	RJ-45
100BASE-TX	CAT 5 100-ohm	UTP 100 m (328 ft.)	RJ-45

DB9 Console Port Wiring: The serial port can be connected using a DB9 cable. The DB9 connector supports RS232 / RS422 / RS485 operation modes.

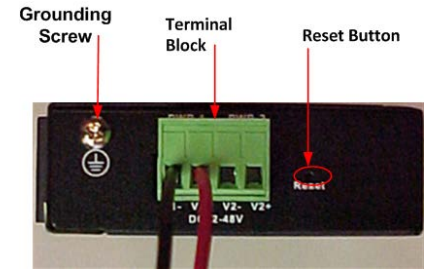
DIP Switch for RS 422/485 termination and **DB-9 Serial Port** pinout: see the full User Guide for details.

Wiring

Warning: Perform the Connections above before performing the Wiring below. Do not disconnect modules or wires unless power is switched off or the area is known to be non-hazardous. See the full *User Guide* for more information.

Redundant Power Inputs: The device has two sets of DC power inputs on the 4-pin terminal block on top of the device.

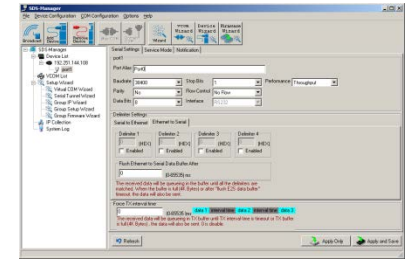
1. Insert the Terminal Block connector into the keyed receptacle on the SDS.
2. Insert the negative/positive wires into the V- and V+ terminals, respectively.
3. Use a small flat-blade screwdriver to tighten the wire-clamp screws on the terminal block connector.
4. Connect the female barrel connector on the provided cable to the male barrel connector on the provided power supply.
5. Connect the provided power supply to a live grounded power outlet.



Configuration via SDS-Manager

The SDS-Manager supports device discovery, device configuration, group setup, group firmware update, and monitoring. It lets you easily install and configure network devices. The factory defaults are IP address: 192.168.1.77, Subnet Mask: 255.255.255.0, Default Gateway: 192.168.1.254, User Name: root, and Password: root. To install SDS-Manager:

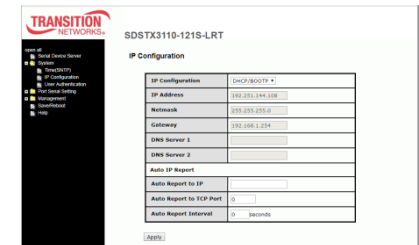
1. Download SDS-Manager from the TN [website](#) (registration/login required).
2. Select the folder for the SDS-Manager and click **Start** to run the setup program. The destination directory screen displays.
3. Click **Start** to install in the default directory (*C:\Program Files\SDS-Manager*), or select another location and click **Start**.
4. Check either the **Launch SDS-Manager Now** checkbox or the **Launch SDS-Manager Later** checkbox.
5. See the *SDS User Guide* for SDS Manager functions (Configuration, Monitor, Setup Wizard, IP Collection, System Log).



Configuration via Web Browser

The SDS can be managed via a built-in webservice running IE v 5.0 or above or other web browsers such as Chrome. This allows simple remote device monitoring and configuration, such as firmware upgrades. To manage your SDS via a Web browser:

1. Launch a Web browser.
2. At <https://> type the default IP (192.168.1.77) and press Enter.
3. At the login screen, type the default username **root** and the default password **root**.
4. Press Enter or click **OK**; the System Information page displays. The left side of the page provides links to configurable settings.
5. Click on a link to display its configuration page.



Configuration via SSH Console

You can use an SSH tool such as PuTTY to access the SSH console of the device. The PuTTY settings are Serial line to connect to: COM1, Speed (baud): 9600, Data bits: 8, Stop bits: 1, Parity: None, Flow control: XON/XOFF. Default User Name: root. Default Password: root.

Transition Networks * 10900 Red Circle Drive * Minnetonka, MN 55343, U.S.A * Telephone: 952-941-7600 * Toll free: 800-526-9267 * * Fax: 952-941-2322 * Web: <https://www.transition.com/> * Tech support: techsupport@transition.com *

