

CommandPoint NMS

A Comprehensive Network Management System for Transition Networks Products



CommandPoint NMS, Transition Networks' comprehensive Network Management System simplifies management and provisioning of Transition Networks' switches and media converters. With its intuitive user interface, CommandPoint NMS makes deployment, monitoring and maintenance of managed Transition Networks' devices simple and efficient thereby reducing operational expenses and lowering total cost of ownership.

CommandPoint NMS is based on a microservice architecture which because of its modularity allows for ease of deploying new features and high scalability. CommandPoint NMS provides a complete REST API which allows easy integration with higher level NMS for flow through management reducing the cost of integration with existing management solutions.

Current Features

- Client Server system supporting any Web Browser Client and multiple concurrent users
- Centralized Fault Management with real-time view of SNMP traps and Syslog events
- Up to date consolidated network inventory view with devices details such as firmware version
- Hassle-free network-wide firmware upgrades, device configuration backups/restores
- Advanced scheduling capability allows flexibility to perform device updates during maintenance window
- User management by admin user
- Internal or External tftp server support for firmware and configuration files

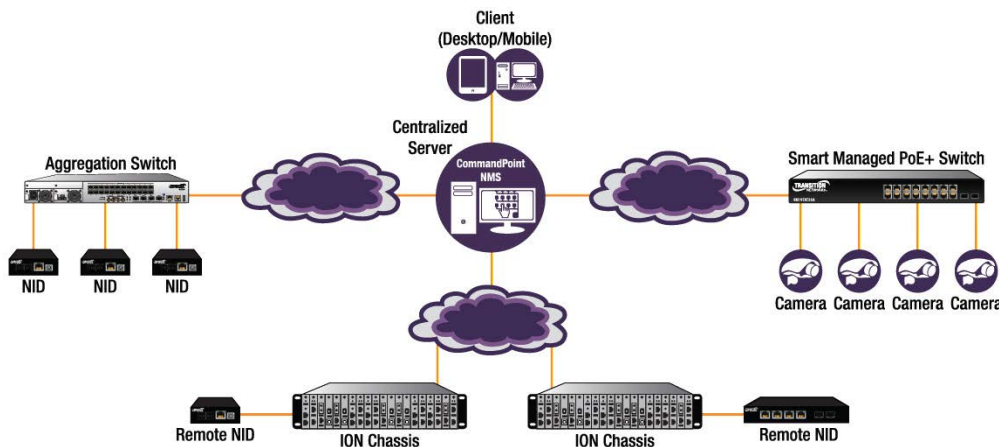
System Requirements

System	Ubuntu 16.04 LTS or later (VM or Native)
CPU	At least 2 CPUs on the VM, 2 GHz dual core processor or better
RAM	At least 8GB
Hard Disk Space	At least 60GB
Internet Access	Required

Future Functionality

- Easy File Management of files on tftp server with ability to clone and edit configuration files
- User roles management and Role based access
- Advanced User management with detailed audit log
- Alarms acknowledgement and management
- Centralized performance data collection and management
- Network Topology view

See product page on transition.com for list of supported products



Perpetual License

- CPNMS-100-PL**
Manage up to 100 Network Elements
- CPNMS-500-PL**
Manage up to 500 Network Elements
- CPNMS-1000-PL**
Manage up to 1,000 Network Elements
- CPNMS-2000-PL**
Manage up to 2,000 Network Elements
- Add Network Elements
- CPNMS-PLUS100-PL**
Add 100 Network Elements
- CPNMS-PLUS500-PL**
Add 500 Network Elements
- Perpetual License Annual Support Fee**
(Required for 1st year of perpetual license)
- CPNMS-100-ASF**
Annual Support Fee for CPNMS-100-PL
- CPNMS-500-ASF**
Annual Support Fee for CPNMS-500-PL
- CPNMS-1000-ASF**
Annual Support Fee for CPNMS-1000-PL
- CPNMS-2000-ASF**
Annual Support Fee for CPNMS-2000-PL
- Add Network Elements
- CPNMS-PLUS100-ASF**
Annual Support Fee for CPNMS-PLUS100-PL
- CPNMS-PLUS500-ASF**
Annual Support Fee for CPNMS-PLUS500-PL

Annual Subscription

- (Includes License and Support Fee)
- CPNMS-500-AL**
Manage up to 500 Network Elements
 - CPNMS-1000-AL**
Manage up to 1,000 Network Elements
 - CPNMS-2000-AL**
Manage up to 2,000 Network Elements
 - Add Network Elements
 - CPNMS-PLUS100-AL**
Add 100 Network Elements
 - CPNMS-PLUS500-AL**
Add 500 Network Elements